

Wild Side Events

A Talk on the Wild Side and Get Close to the Wild Side.
Two events especially tailored for U3A groups by WWT.



“What WWT has achieved matches Sir Peter Scott’s ambition and it is astonishing”
Sir David Attenborough

This Autumn WWT would like to invite U3A groups to events designed exclusively for them.

Following on from the success of **A Talk on the Wild Side** last year, our other five WWT Wetland Centres are now hosting this event: Arundel, Llanelli, Martin Mere, Washington and Welney.

The day will centre around an **illustrated talk** on WWT’s founder, Sir Peter Scott, and how his ideas have helped shape the way we protect the natural world today. After the talk and a break for lunch, we’ll take you on a **bespoke guided tour** of our Wetland Centre, allowing your group to get close to and learn more about some of the fascinating wildlife that call our centres home.

WWT are also hosting a **NEW Get Close to the Wild Side** event at WWT Caerlaverock, WWT Castle Espie, WWT Slimbridge and WWT London. Your group will enjoy a variety of exclusive get close to nature activities, including, for example at WWT London pond dipping for adults and a guide to bird watching in our hides – similar activities will be held at the other centres.



A Talk On The Wild Side

WWT Llanelli, South Wales

Tue 12, Wed 20 & Thu 28 Sept

wwt.org.uk/llanelli

t 01554 741087

e groups.llanelli.org.uk

£12 per person for a group of 12 or more

WWT Arundel, West Sussex

Tue 26 Sept, Wed 4 & Thu 12 Oct

wwt.org.uk/arundel

t 01903 881530

e groups.arundel@wwt.org.uk

£12 per person for a group of 12 or more

WWT Martin Mere, Lancashire

Wed 27 Sept, Tue 3 & Wed 11 Oct

wwt.org.uk/martinmere

t 01704 895181

e groups.martinmere@wwt.org.uk

£12 per person for a group of 12 or more

WWT Washington, Tyne and Wear

Wed 4 & Thu 5 Oct

wwt.org.uk/washington

t 01914 165454

e groups.washington@wwt.org.uk

£12 per person for a group of 12 or more

WWT Welney, Norfolk

Dates TBC

wwt.org.uk/welney

t 01353 860711

e groups.welney@wwt.org.uk

£12 per person for a group of 12 or more

Get Close To The Wild Side

WWT Slimbridge, Gloucestershire

Tue 12, Thu 14 & Wed 20 Sept

wwt.org.uk/slimbridge

t 01453 891223

e groups.slimbridge@wwt.org.uk

£17.50 per person for a group of 12 or more

WWT London, Barnes

Thu 21 Sept & Tue 3 Oct

wwt.org.uk/london

t 0208 409 4400 (ext 0)

e groups.london@wwt.org.uk

£14 per person for a group of 12 or more

WWT Castle Espie, N. Ireland

Wed 26, Thu 27 & Fri 28 Sept

wwt.org.uk/castle-espie

t 02891 874146

e groups.castleespie@wwt.org.uk

£12 per person for a group of 12 or more

WWT Caerlaverock, Scotland

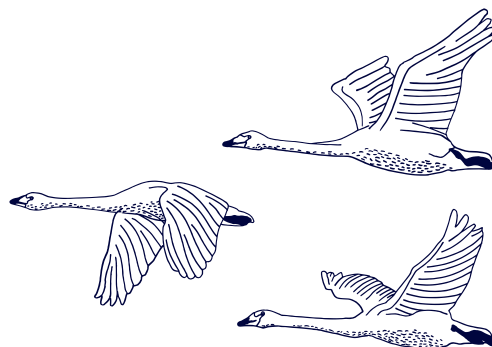
Tue 6, Wed 7 & Thu 8 March 2018

wwt.org.uk/Caerlaverock

t 01387 770200

e groups.cerlaverock@wwt.org.uk

£12 per person for a group of 12 or more



This price covers admission, welcome refreshments and activities.

All venues have maximum capacity, tickets will be sold to U3A groups of 12 or more people on a first come first served basis. Pre-booking is essential. U3A group leaders need to supply the names and contact details of their group members. WWT will send confirmation of your group booking and details of how to pay or advise if your requested date is unavailable.

Our nine WWT Wetland Centres offer groups amazing days out 364 days a year.

We have an extensive range of benefits for groups.

For more information visit wwt.org.uk/groups

